

Magnets and fixing systems

CALAMITA is a complete line of magnetic assemblies made by a magnet core glue or injected into a steel body. That allow a stronger magnetic force suitable for many kind of customized applications.

Product features:

1. Magnet: all kind of magnetic properties like Alnico Neodymium, Ferrite or Samarium according with final application
2. Design: according to the requirements of customers
3. Production: Modern assembly line and first rate machining equipments

CALAMITA holding magnets can provide up to thirty times the strength of individual magnets, making them useful in many industrial applications in the construction, engineering, automotive, electronic and agricultural industries, etc.

CALAMITA magnetic assemblies are also used for mounting, lifting, holding or transferring objects.

How to select your CALAMITA product:

When selecting CALAMITA magnet assemblies, consider the environment in which the assembly will be used, like temperature. What is the holding force needed based on the size and weight of the parts involved and how will the assembly be secured, whether bolted, mounted, fastened or adhered? Also, consider the shape of the magnet desired (e.g. disc, ring, rectangle, etc.) and the size, including diameter, length, width and height.

Holding magnets

Code	Material	POT				Magnet	Coated	Pull Force (N)
		A	B	C	D			
CA-F0110	Fe37	10	4.5	M3	11.5	Ferrite	Zn	4
CA-F0113	Fe37	13	4.5	M3	11.5	Ferrite	Zn	10
CA-F0116	Fe37	16	4.5	M3	11.5	Ferrite	Zn	18
CA-F0120	Fe37	20	6	M3	13	Ferrite	Zn	30
CA-F0122	Fe37	22	7	M5	17	Ferrite	Zn	35
CA-F0122A	Fe37	22	6	M5	16	Ferrite	Ni	35
CA-F0123	Fe37	23	7	M5	20	Ferrite	Zn	35
CA-F0125	Fe37	25	7	M4	15	Ferrite	Zn	40
CA-F0132	Fe37	32	7	M5	23	Ferrite	Zn	80
CA-F0132A	Fe37	32	7	M6	23	Ferrite	Zn	80
CA-F0132B	Fe37	32	7	M4	15	Ferrite	Zn	80
CA-N0163	Fe37	63	14	M8	27	NdFeB	Zn	350
CA-N0110	Fe37	10	4.5	M4	12.5	NdFeB	Zn	30
CA-N0113	Fe37	13	4.5	M5	12.5	NdFeB	Zn	60
CA-N0116	Fe37	16	4.5	M6	12.5	NdFeB	Zn	100
CA-N0118	Fe37	18	7	M5	17	NdFeB	Zn	100
CA-N0120	Fe37	20	7	M5	17	NdFeB	Zn	150
CA-N0120A	Fe37	20	7	M6	14	NdFeB	Zn	150
CA-N0120B	Fe37	20	6	M6	16	NdFeB	Zn	150
CA-N0122	Fe37	22	7	M5	17	NdFeB	Zn	150
CA-N0125A	Fe37	25	7	M6	17	NdFeB	Zn	270
CA-N0125B	Fe37	25	7	10	25	NdFeB	Zn	270
CA-N0130	Fe37	30	5	M6	25	NdFeB	Ni	300
CA-N0130A	Fe37	30	5	M6	28	NdFeB	Zn	300
CA-N0132	Fe37	32	7	M6	10.5	NdFeB	Zn	450
CA-N0132A	Fe37	32	7	M6	19	NdFeB	Zn	450
CA-N0132B	Fe37	32	7	M6	17	NdFeB	Zn	450
CA-N0132C	Fe37	32	7	M6	17	NdFeB	Rubber	200
CA-N0135	Fe37	35	7	M6	19	NdFeB	Zn	300
CA-N0135A	Fe37	35	15	M6	40	NdFeB	Zn	400

Calamite e sistemi di fissaggio magnetici

CALAMITA è una linea di assemblati magnetici formati da un nucleo magnetico incollato o iniettato in un corpo in acciaio. Ciò permette una maggiore forza magnetica adatta a molteplici applicazioni customizzate.

Caratteristiche del prodotto:

1. Magnete: diversi tipi di qualità magnetiche come Alnico, Neodimio, Ferrite, Samario Cobalto a seconda dell'applicazione finale
2. Design: in accordo alle richieste del cliente
3. Produzione: sistemi di assemblaggio moderni ed attrezzature di primo livello

I magneti di fissaggio CALAMITA possono fornire fino a trenta volte la forza di un singolo magnete, rendendoli utili in molte applicazioni: industriali, costruzioni, engineering, automotive, elettronico e industria agricola.

Le linee CALAMITA sono inoltre utilizzate per il montaggio, l'elevazione, il fissaggio e lo spostamento di oggetti.

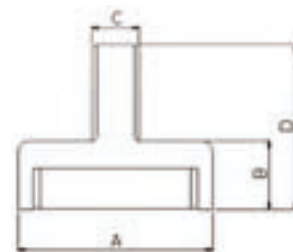
Come selezionare il tuo prodotto CALAMITA:

Quando si seleziona un prodotto CALAMITA occorre considerare:

- l'ambiente in cui essi saranno usati e la temperatura
- qual è la forza di tenuta necessaria per dimensione e peso delle parti coinvolte
- come si assembleranno/monteranno i pezzi (avvitati, incollati, fissati)
- la forma del magnete desiderato (esempio: disco, anello, rettangolo ecc.) e la sua dimensione, incluso diametro, lunghezza, larghezza e altezza.

Magneti di fissaggio

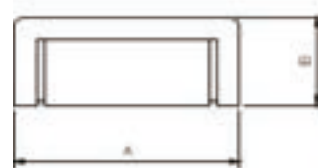
Type
Tipo **CA**



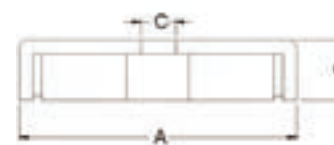
Other type on demand.

Altri tipi a richiesta.

Code	POT					Magnet	Coated	Pull Force (N)
	Material	A	B	C	D			
CE-F0510	Fe37	10	4.5	-	-	Ferrite	Zn	4
CE-F0513	Fe37	13	4.5	-	-	Ferrite	Zn	10
CE-F0516	Fe37	16	4.5	-	-	Ferrite	Zn	18
CE-F0517	Fe37	17	5	-	-	Ferrite	Zn	24
CE-F0520	Fe37	20	6	-	-	Ferrite	Zn	30
CE-F0522	Fe37	22	4	-	-	Ferrite	Zn	34
CE-F0525	Fe37	25	7	-	-	Ferrite	Zn	40
CE-F0532	Fe37	32	7	-	-	Ferrite	Zn	80
CE-F0536	Fe37	36	7.7	-	-	Ferrite	Zn	100
CE-F0540	Fe37	40	8	-	-	Ferrite	Zn	125
CE-F0547	Fe37	47	9	-	-	Ferrite	Zn	180
CE-F0550	Fe37	50	10	-	-	Ferrite	Zn	220
CE-F0557	Fe37	57	10.5	-	-	Ferrite	Zn	280
CE-F0563	Fe37	63	14	-	-	Ferrite	Zn	350
CE-F0580	Fe37	80	18	-	-	Ferrite	Zn	600
CE-F05100	Fe37	100	22	-	-	Ferrite	Zn	900
CE-F05125	Fe37	125	26	-	-	Ferrite	Zn	1300
CE-N0506	Fe37	6	4.5	-	-	NdFeB	Zn	5
CE-N0508	Fe37	8	4.5	-	-	NdFeB	Zn	13
CE-N0510	Fe37	10	4.5	-	-	NdFeB	Zn	25
CE-N0513	Fe37	13	4.5	-	-	NdFeB	Zn	60
CE-N0516	Fe37	16	4.5	-	-	NdFeB	Zn	95
CE-N0516A	Fe37	16	4	-	-	NdFeB	Zn	135
CE-N0518	Fe37	18	5.5	-	-	NdFeB	Ni	95
CE-N0520	Fe37	20	6	-	-	NdFeB	Zn	150
CE-N0520A	Fe37	20	20	-	-	NdFeB	Cr	70
CE-N0521	Fe37	21	4.2	-	-	NdFeB	Ni	250
CE-N0525	Fe37	25	7	-	-	NdFeB	Zn	270
CE-N0530	Fe37	30	5.1	-	-	NdFeB	Ni	300
CE-N0532	Fe37	32	7	-	-	NdFeB	Zn	450

Type
Tipo **CE**

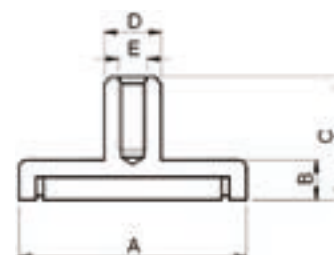
CF-F0632	Fe37	32	6	6	-	Ferrite	Cr	65
CF-F0636B	Fe37	36	7	4.8	-	Ferrite	Ni	70
CF-F0645	Fe37	45	10.3	4.5	-	Ferrite	Zn	70
CF-F0645A	Fe37	45	10.3	7	-	Ferrite	Ni	70
CF-F0645B	Fe37	45	10.3	4	-	Ferrite	Ni	70
CF-F0650	Fe37	50	10.5	8.5	-	Ferrite	Zn	180
CF-F0651	Fe37	51	6.3	4.7	-	Ferrite	Cr	60
CF-F0651.6	Fe37	51.6	7.85	5.2	-	Ferrite	Cr	180
CF-F0653	Fe37	53	11	6.5	-	Ferrite	Zn	180
CF-F0653A	Fe37	53	10.3	4	-	Ferrite	Ni	180
CF-F0655	Fe37	55	11	4.5	-	Ferrite	Zn	180
CF-F0660.2	Fe37	60.2	9	8	-	Ferrite	Cr	220
CF-F0660.3	Fe37	60.3	8.9	6.4	-	Ferrite	Cr	190
CF-F0663	Fe37	63	14	6.5	-	Ferrite	Zn	290
CF-F0667	Fe37	67	9.5	6.3	-	Ferrite	Cr	265
CF-F0667B	Fe37	67	10.8	10.16	-	Ferrite	Zn	355
CF-F0671	Fe37	71	15.3	10.5	-	Ferrite	Zn	400
CF-F0671A	Fe37	71	9.5	6.3	-	Ferrite	Cr	400
CF-F0676	Fe37	76	12	6	-	Ferrite	Zn	260
CF-F0679.5	Fe37	79.5	11	8.3	-	Ferrite	Cr	350
CF-F0680	Fe37	80	18	6.5	-	Ferrite	Zn	540
CF-F0680A	Fe37	80	10.5	7.2	-	Ferrite	Cr	350
CF-F0680B	Fe37	80	11.11	9.525	-	Ferrite	Cr	300
CF-F0680C	Fe37	80	12.7	10.16	-	Ferrite	Zn	450
CF-F0681.3	Fe37	81.3	10.5	10	-	Ferrite	Ni	360
CF-F0681.3A	Fe37	81.3	11	7.1	-	Ferrite	Cr	360
CF-F0681.3B	Fe37	81.3	10.8	12.7	-	Ferrite	Cr	360
CF-F0683	Fe37	83	18	10.5	-	Ferrite	Zn	600
CF-F0688	Fe37	88	18	8.5	-	Ferrite	Ni	550
CF-F0695	Fe37	95	12.7	12.7	-	Ferrite	Cr	620
CF-F0696.3	Fe37	96.3	12.7	9.6	-	Ferrite	Cr	600
CF-F06100A	Fe37	100	22	10.5	-	Ferrite	Cr	680
CF-F06124	Fe37	124	12.7	12.7	-	Ferrite	Cr	700
CF-N0620	Fe37	20	4	3.1	-	NdFeB	Zn	80
CF-N0625	Fe37	25	7	6	-	NdFeB	Zn	100
CF-N0636	Fe37	36	7.1	4.8	-	NdFeB	Zn	250
CF-N0640A	Fe37	40	8	5.5	-	NdFeB	Zn	200

Type
Tipo **CF**

Other type on demand.

Altri tipi a richiesta.

Code	Material	POT					Magnet	Coated	Pull Force (N)
		A	B	C	D	E			
CH-F0810	Fe37	10	4.5	11.5	6	M3	Ferrite	Zn	4
CH-F0813	Fe37	13	4.5	11.5	6	M3	Ferrite	Zn	10
CH-F0816	Fe37	16	4.5	11.5	6	M3	Ferrite	Zn	18
CH-F0820	Fe37	20	6	13	6	M3	Ferrite	Zn	30
CH-F0825	Fe37	25	7	15	8	M4	Ferrite	Zn	40
CH-F0825A	Fe37	25	7	16	10	M5	Ferrite	Zn	40
CH-F0825C	Fe37	25	7	15	8	M4	Ferrite	Zn	40
CH-F0832	Fe37	32	7	15	8	M4	Ferrite	Zn	80
CH-F0836	Fe37	36	7.7	16	8	M4	Ferrite	Zn	100
CH-F0840	Fe37	40	8	16.5	8	M4	Ferrite	Zn	125
CH-F0840A	Fe37	40	8	18	10	M5	Ferrite	Zn	125
CH-F0847	Fe37	47	9	17	8	M4	Ferrite	Zn	180
CH-F0850	Fe37	50	10	18.5	8	M4	Ferrite	Zn	220
CH-F0850A	Fe37	50	10	22	12	M6	Ferrite	Zn	220
CH-F0850B	Fe37	50	10	18.5	8	M4	Ferrite	Cr	220
CH-F0857	Fe37	57	10.5	18.5	8	M4	Ferrite	Zn	280
CH-F0863	Fe37	63	14	30	15	M8	Ferrite	Zn	350
CH-F0880	Fe37	80	18	34	20	M10	Ferrite	Zn	600
CH-F0880A	Fe37	80	18	34	20	M10	Ferrite	Cr	600
CH-F08100	Fe37	100	22	43	22	M12	Ferrite	Zn	900
CH-F08125	Fe37	125	26	50	25	M14	Ferrite	Zn	1300
CH-F08125A	Fe37	125	26	50	25	M14	Ferrite	Cr	1300
CH-N0806	Fe37	6	4.5	11.5	6	M3	NdFeB	Zn	5
CH-N0808	Fe37	8	4.5	11.5	6	M3	NdFeB	Zn	13
CH-N0810	Fe37	10	4.5	11.5	6	M3	NdFeB	Zn	25
CH-N0810A	Fe37	10	4.5	11.5	6	M3	NdFeB	Zn	25
CH-N0813	Fe37	13	4.5	11.5	6	M3	NdFeB	Zn	60
CH-N0816	Fe37	16	4.5	11.5	6	M4	NdFeB	Zn	95
CH-N0816A	Fe37	16	6	11.5	8	M4	NdFeB	Zn	95
CH-N0816B	Fe37	16	4	11.5	6	M4	NdFeB	Zn	95
CH-N0820	Fe37	20	4.5	13	8	M4	NdFeB	Zn	140
CH-N0820A	Fe37	20	6	13	8	M4	NdFeB	Zn	140
CH-N0820B	Fe37	20	6	13	8	M4	NdFeB	Zn	140
CH-N0825	Fe37	25	6	14	8	M4	NdFeB	Zn	200
CH-N0825A	Fe37	25	7	14	8	M4	NdFeB	Zn	200
CH-N0825B	Fe37	25	7	14	8	M4	NdFeB	Zn	200
CH-N0832	Fe37	32	7	15.5	10	M5	NdFeB	Zn	350
CH-N0832A	Fe37	32	7	15.5	10	M5	NdFeB	Zn	350
CH-N0832B	Fe37	32	7	15.5	10	M5	NdFeB	Zn	350
CH-N0843	Fe37	43	4.2	10.1	8	M4	NdFeB	Zn	128
CH-N0843A	Fe37	43	5.1	10.3	8	M4	NdFeB	Zn	128

Type
Tipo **CH**

Other type on demand.

Altri tipi a richiesta.

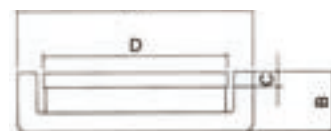
Speaker and Drivers magnets

CALAMITA is a complete line of magnetic assemblies made by a magnet core glue or injected into a steel body. That allow a stronger magnetic force suitable for many kind of customized applications.

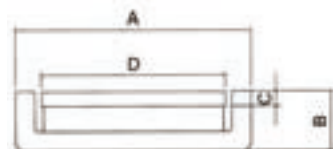
Code	U Y OKE (øAXB)	Magnet	Washer (DXC)	Air Gap (DXC)	Magnetic Flux (GS)
SA-0113	18 x 5	NdFeB	ø12.8 x 1.5	0.700	
SA-0113A	18 x 6	NdFeB	ø12.95 x 2	0.575	
SA-0113B	21.4 x 7	NdFeB	ø12.95 x 1.5	0.600	
SA-0113C	26.5 x 4.9	NdFeB	ø12.95 x 1.5	0.750	6500
SA-0113E	18.5 x 6	NdFeB	ø12.95 x 1.5	0.675	
SA-0113F	18 x 6.5	NdFeB	ø13 x 2	0.625	
SA-01B13	21.5 x 8.5	NdFeB	ø12.95 x 2	0.625	
SA-0119	27.2 x 7	NdFeB	ø18.95 x 2	1.125	
SA-0119A	26 x 6.5	NdFeB	ø19 x 1.5	1.250	
SA-0119B	26 x 6.5	NdFeB	ø19 x 2	1.250	
SA-0119C	24.6 x 8.3	NdFeB	ø18.6 x 1.3	1.000	11000
SA-0119D	27.5 x 8.5	NdFeB	ø19 x 2	0.750	
SA-0119DA	27.3 x 8.5	NdFeB	ø19 x 2	0.750	10000
SA-0119F	26.1 x 8	NdFeB	ø19 x 2	0.750	
SA-0119G	26 x 9	NdFeB	ø19 x 2.5	0.625	

>>> Continue

>>> Continua

Type
Tipo **SA**

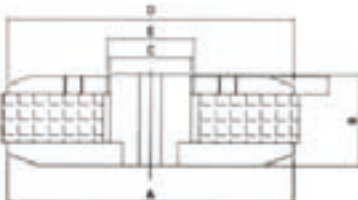
Code	U Y OKE (øAXB)	Magnet	Washer (DXC)	Air Gap (DXC)	Magnetic Flux (GS)
SA-0120	26 x 7	NdFeB	ø19.95 x 2.5	0.775	
SA-0120A	26 x 7	NdFeB	ø19.95 x 2	0.775	
SA-0120B	26 x 6.5	NdFeB	ø19.95 x 2	0.775	
SA-0120C	26 x 7.5	NdFeB	ø19.95 x 2	0.775	6500
SA-0120D	26 x 8	NdFeB	ø19.95 x 2	0.775	
SA-0120E	25.9 x 7.5	NdFeB	ø19.9 x 1.5	0.800	
SA-0125	33 x 9.3	NdFeB	ø24.92 x 3.5	0.840	
SA-0125A	32.6 x 10.2	NdFeB	ø24.92 x 3.5	0.840	
SA-0125B	33 x 8.5	NdFeB	ø24.95 x 3	1.025	
SA-0125C	37 x 9	NdFeB	ø25 x 2.5	0.950	
SA-0125D	33 x 10	NdFeB	ø24.92 x 3.5	1.040	11000
SA-0125E	36.8 x 10	NdFeB	ø24.95 x 3.5	0.875	
SA-0125F	32 x 7.6	NdFeB	ø24.95 x 2	0.925	10000
SA-0125FA	32 x 8.1	NdFeB	ø24.95 x 2	0.925	
SA-0125FE	32 x 8.1	NdFeB	ø24.95 x 5 x 2	0.925	
SA-0125G	36.2 x 7.5	NdFeB	ø25.1 x 2	0.700	
SA-0125JA	32 x 6.7	NdFeB	ø24.95 x 1.5	0.925	10000
SA-0125K	32 x 7.5	NdFeB	ø24.95 x 1.5	0.725	13000
SA-0125L	35.8 x 18.7	NdFeB	ø24.95 x 4	1.025	
SA-0125M	32 x 8.6	NdFeB	ø24.95 x 3	0.925	10000
SA-0125N	33 x 8.5	NdFeB	ø24.95 x 2	0.875	11500
SA-0125P	37 x 11.3	NdFeB	ø24.95 x 3	0.725	
SA-0125Q	40 x 9	NdFeB	ø24.9 x 3	1.000	9800
SA-0125R	32 x 10	NdFeB	ø25 x 3	0.625	
SA-01A25	32 x 6.7	NdFeB	ø24.95 x 1.5	0.925	
SA-01A25A	32 x 6.6	NdFeB	ø25 x 1.5	0.850	
SA-01A25B	32 x 6.6	NdFeB	ø25 x ø3.2 x 1.5	0.850	
SA-01A25F	32.1 x 9	NdFeB	ø24.9 x 2	0.850	
SA-0128	35 x 8.7	NdFeB	ø27.66 x ø6 x 2.6	0.920	
SA-0128A	36 x 8.3	NdFeB	ø27.6 x 2	0.750	
SA-0128B	35 x 8.7	NdFeB	ø27.66 x ø6 x 2.6	0.920	
SA-0129	36 x 7.5	NdFeB	ø29 x 1.5	0.500	

Type **SA**
Tipo

Other type on demand.

Altri tipi a richiesta.

Code	T Yoke Size (AxB-C)	Magnet (Ferrite) Size	Washer Size (DxExH)	Air Gap (mm)	Magnetic Flux (GS)
SC-0400	ø210x54.6-ø75.4	ø220xø110x25.4	ø210xø78.5x10	1.550	
SC-0401	ø70x23-ø24.95	ø80xø32x15	ø70xø26.5x3	0.775	
SC-0402	ø130x39-ø36.9	ø140xø63x20	ø130xø39.4x8	1.250	
SC-0403	ø195x42-ø61.9	ø200xø80x20	ø195xø65.1x10	1.600	
SC-0404	ø215x46.4-ø98.5	ø220xø110x25.4	ø215xø104.5x8	3.000	
SC-0405	ø130x38-ø49.9	ø140xø63x20	ø130xø52.6x8	1.350	
SC-0406	ø177x42-ø61.9	ø200xø80x20	ø177xø64.9x10	1.500	
SC-0407	ø110x41-ø36.9	ø115xø43x22	ø110xø39.4x8	1.250	
SC-0408	ø215x46.4-ø98.5	ø220xø110x25.4	ø215xø102.1x8	1.800	
SC-0409	ø177x42-ø61.8	ø200xø80x20	ø177xø66.1x10	2.150	
SC-0410	ø150x40.5-ø49.9	ø160xø57x17.5	ø150xø52.7x8	1.400	
SC-0410A	ø150x40.5-ø49.9	ø160xø57x17.5	ø150xø54.2x8	2.150	
SC-0411	ø57x21-ø24.95	ø59.5xø32x13	ø63xø26.15x3	0.600	
SC-0412	ø200x61.04-ø101.6	ø215xø115x25.4	ø200xø106x14.3	2.200	
SC-0413	ø200x61.4-ø76.2	ø212xø99x25.4	ø200xø81x14.3	2.400	
SC-0414	ø155.6x46.83-ø63.119	ø165xø70x21	ø155.58xø65.66x9.6	1.270	
SC-0415	ø155.6x46.83-ø50.75	ø165xø60x21	ø155.58xø52.96x9.6	1.105	
SC-0416	ø198x10-ø78	ø220xø110x23	ø176xø103.5x10	12.750	10400
SC-0417	ø94x27-ø50	ø102xø60x17	ø94xø52x4	1.000	11000
SC-0418	ø94x6-ø25	ø100xø45x18	ø94xø38.6x5	6.800	15000

Type **SC**
Tipo

Other type on demand.

Altri tipi a richiesta.

Note:

1. The surface can be nickel coated, zinc coated or chrome coated.
2. The Oper. Temp. are 100 °C.
3. Customer design are accepted.

Note:

1. La superficie può essere nichelata, zincata o cromata.
2. La temperatura operativa è 100 °C.
3. Si accettano disegni su specifiche cliente.